

# BGMHS

- ◎ 双端面
- ◎ 平衡型
- ◎ 任意旋向
- ◎ 集装箱式设计

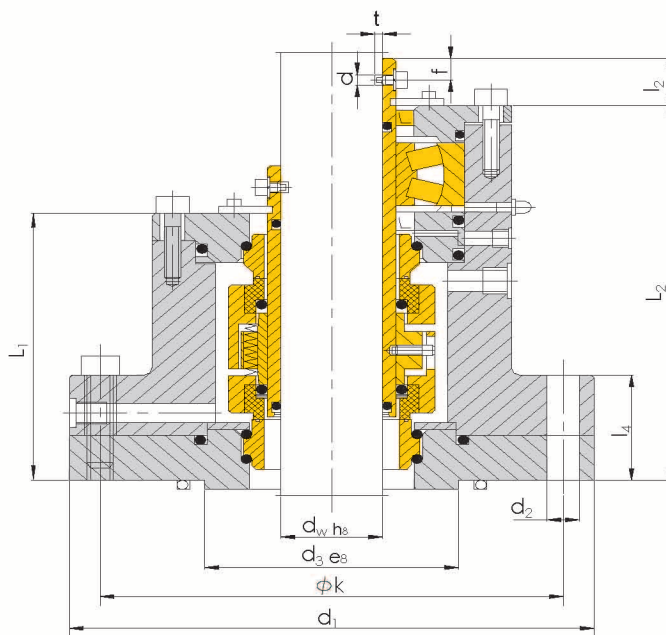
BGMHS系列釜用密封适用于高中压工况,运行时需要增压缓冲液配合。

**Double seal**

**Balanced**

**Independent of direction of rotation cartridge type design**

BGMHS series seal for kettle is suitable for working circumstances of medium and high pressure where the pressure buffer solution is required during running.



## 运行参数

规格: 20~200 mm  
 压力: ≤25 Mpa  
 温度: -40~220°C  
 线速度: ≤5 m/s

## Operating limits

Specification: 20~200 mm  
 Pressure: ≤25 Mpa  
 Temperature: -40~220°C  
 Linear speed: ≤5 m/s

## 材料组合

**密封端面:**  
 石墨, 碳化硅, 碳化钨, 氧化铝  
**辅助密封:**  
 丁腈胶, 氟橡胶, 乙丙胶, PTFE  
**金属构件:**  
 不锈钢

## Combination of materials

**Sealing face**  
 Graphite, Silicon carbide, Tungsten carbide, Aluminum oxide  
**Secondary sealing**  
 Acrylonitrile rubber, Fluorine rubber, Ethylene propylene rubber, PTFE  
**Metal component**  
 Stainless steel

单位 (Unit): mm

d <sub>w</sub>	d <sub>1</sub>	φ <sub>k</sub>	d <sub>3</sub>	nxd <sub>2</sub>	L <sub>1</sub>	L <sub>2</sub>	l <sub>4</sub>	l <sub>2</sub>	l <sub>3</sub>	f	φ <sub>d</sub>	t
20	165	140	55	6x14	100	150	45	20	27	9	5	4
30	170	145	70	6x14	105	160	45	20	27	9	5	4
40	200	170	80	6x18	115	170	45	20	35	9	5	4
50	230	200	100	8x18	120	185	55	25	35	9	5	4
60	255	225	120	8x18	140	210	60	25	35	9	5	4
70	275	245	130	8x18	145	220	60	28	44	9	5	4
80	295	260	145	8x23	145	230	60	28	44	9	5	4
90	310	275	155	8x23	150	245	60	28	44	9	5	4
100	315	280	170	8x23	160	245	65	28	44	9	5	4
110	335	300	180	8x23	160	250	65	28	50	9	5	4
120	345	310	190	8x23	160	250	65	28	50	9	5	4
130	365	330	200	12x23	165	260	65	30	50	11	7	5
140	380	345	215	12x23	165	265	65	30	50	11	7	5
150	420	375	230	12x27	175	285	65	30	50	11	7	5
160	440	395	240	12x27	185	300	75	30	50	11	7	5
170	455	410	250	12x27	185	300	75	30	55	11	7	5
180	475	430	260	12x27	185	310	75	30	55	11	7	5
190	465	420	270	12x27	185	285	75	30	55	11	7	5
200	465	420	290	12x27	190	295	75	30	55	11	7	5

1) l<sub>3</sub>尺寸为卡套式驱动的尺寸.(相当于l<sub>2</sub>位置)      2) 其它规格尺寸数据可另行索取

1) The l<sub>3</sub> dimension is the dimension for guard staple driving (equal with position l<sub>2</sub>)

2) Parameter of other type can be acquired at other time.